

The Courses and Distances
up Buffalo Lick Creek
beginning at a bunch of
Service Bushes on the bank
are as followeth.

N 55° E 25 Perches
N 36° E 18.
N 65° E 31.
S 81° E 7.7 to
a White Oak on the 81.7.

Bank a Corner of
Peter Graff's thence

North 17. Perches
N 35° E 13.
N 59½° E 6.
S 69° E 9.
N 33° E 13.
N 67° E 26.
S 80° E 28 to a

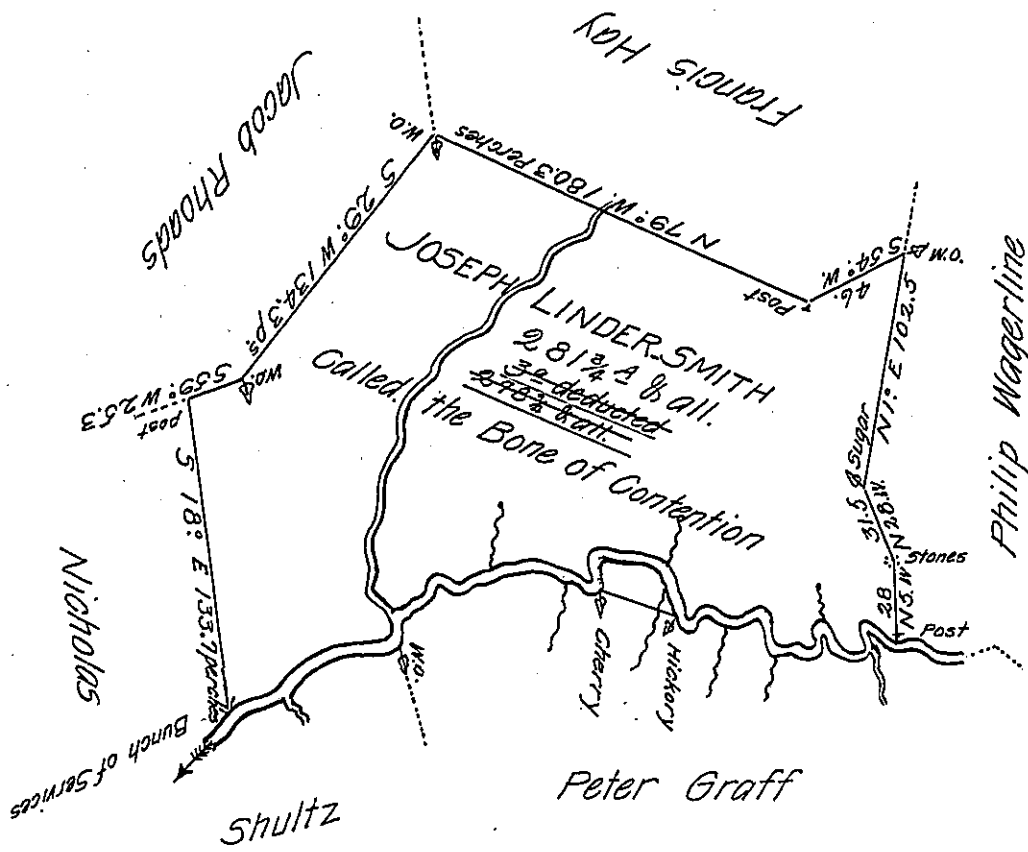
Wild Cherry Tree on the 112.

Bank thence

S 84° E 35 Perches to a
Hickory Tree on the Bank thence

S 65° E 6. Perches
N 8° E 5.
N 86° E 32.
S 37° E 11.
N 79° E 34.
N 44° E 15.
S 73° E 6 to a

Post of Philip Wagerline's 103.
on the Bank.



Situated on the North side of Buffalo Lick Creek including his Improvement in
Brothers' Valley Township Bedford County and Surveyed the 7th day of April 1785.
In Pursuance of a Warrant dated the 9th day of September 1784.

for Alexander M^cGlean Esq^r D.S.

To John Lukens Esq^r }
Surveyor General }

Thomas Vickroy

Now Somerset County.

IN TESTIMONY that the above is a copy of the original remaining on file in
the Department of Internal Affairs of Pennsylvania, made
conformably to an Act of Assembly approved the 16th day of
February, 1833, I have hereunto set my Hand and caused
the Seal of said Department to be affixed at Harrisburg,
this twenty seventh day of October 1906.

Laurel R. Brown
Secretary of Internal Affairs.